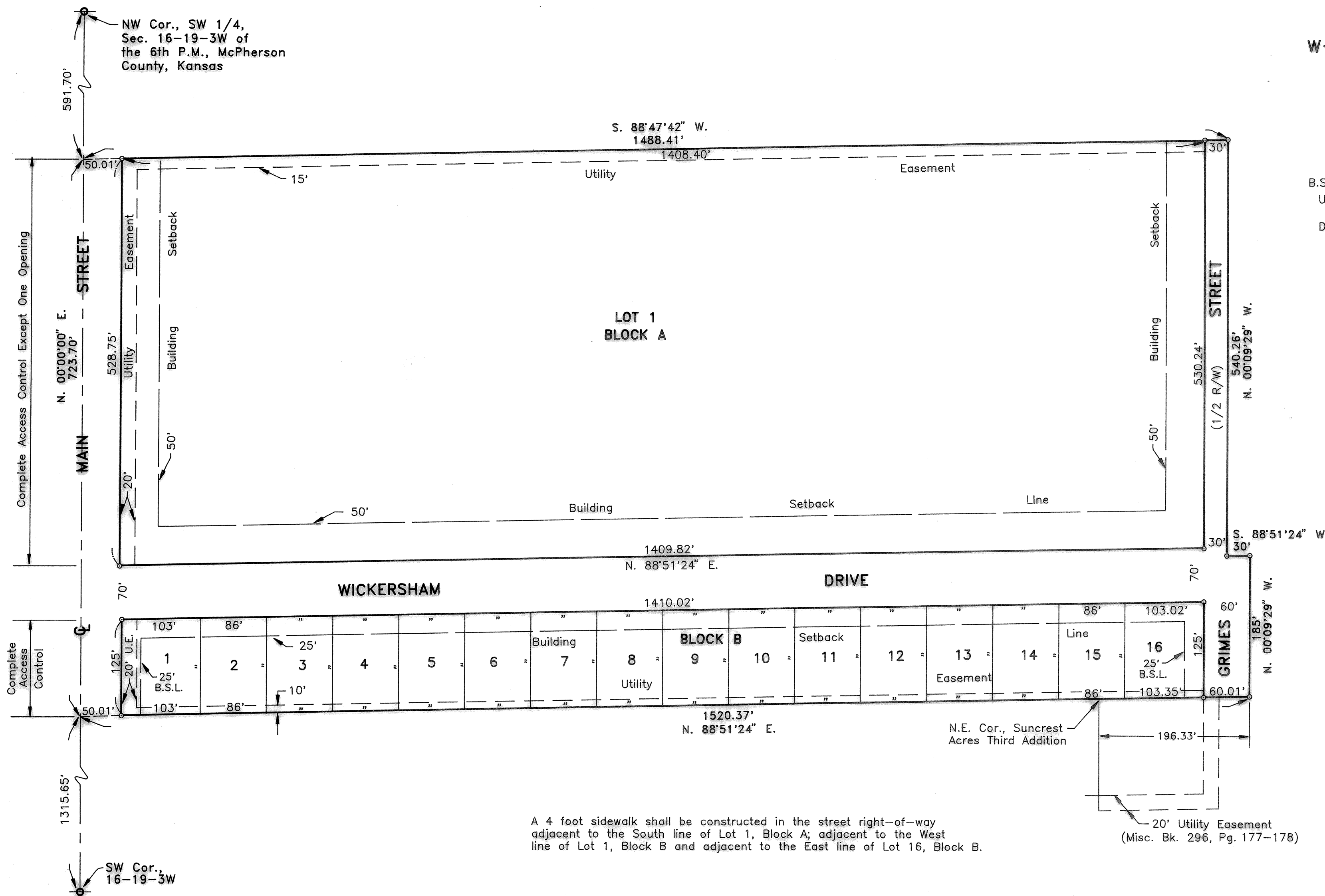


# NORTH SUNCREST HEIGHTS

An Addition To McPherson, McPherson County, Kansas

1" = 100'  
o = 5/8" rebar in concrete (set)  
B.S.L. = Building Setback Line  
U.E. = Utility Easement  
Dated February 28, 1995



A 4 foot sidewalk shall be constructed in the street right-of-way adjacent to the South line of Lot 1, Block A; adjacent to the West line of Lot 1, Block B and adjacent to the East line of Lot 16, Block B.

### PLANNING COMMISSION CERTIFICATE

STATE OF KANSAS } S.S.  
CITY OF McPHERSON }  
This plat was approved by the McPherson City Planning Commission on February 28, 1995.  
Signed April 4, 1995.  
Melvin I. Tarum, Chairman  
Melvin I. Tarum

### CITY ATTORNEY'S CERTIFICATE

STATE OF KANSAS } S.S.  
CITY OF McPHERSON }  
This plat is approved pursuant to the provisions of K.S.A. 12-401.  
Date Signed: April 6, 1995  
Philip C. Lacey  
Philip C. Lacey  
City Attorney

ATTEST:  
Larry O. Smith, Secretary  
Larry O. Smith

### GOVERNING BODY CERTIFICATE

STATE OF KANSAS } S.S.  
CITY OF McPHERSON }  
The Dedications shown on this plat, if any, are hereby accepted by the Governing Body of the City of McPherson, Kansas on 4-3, 1995.  
Vernon L. Dossett, Mayor

### COUNTY CLERK AND CITY CLERK CERTIFICATE

STATE OF KANSAS } S.S.  
COUNTY OF McPHERSON }  
CITY OF McPHERSON }  
We, the undersigned, County Clerk of McPherson County, Kansas and City Clerk of the City of McPherson, Kansas, within our respective jurisdictions, do hereby certify that at the date of this certificate, all currently due and owing taxes and special assessments of any kind assessed against any of the land included in this plat, have been paid.  
Date Signed: 4-13-95  
Susan Henson, County Clerk  
Date Signed: 4-4-95  
William J. Goering, City Clerk

### LAND SURVEYOR'S CERTIFICATE AND DESCRIPTION

I, the undersigned registered land surveyor of the State of Kansas, do hereby certify that the following described tract of land was surveyed on January 20, 1995 and the accompanying final plat prepared and that all the monuments shown herein actually exist and their positions are correctly shown to the best of my knowledge and belief:

From the SW cor. of the SW 1/4 of Section 16, Township 19 South, Range 3 West of the 6th P.M., McPherson County, Kansas, North along the West line of said SW 1/4 and with an assumed bearing of N. 00°00'00" E., a distance of 1315.65 feet to the NW cor. of Suncrest Acres First Addition to the City of McPherson, Kansas; thence N. 88°51'24" E. along the North line of Suncrest Acres First and Second Additions to the City of McPherson, Kansas, a distance of 662.02 feet to the point of beginning; thence continuing N. 88°51'24" E., a distance of 858.35 feet to a point 196.33 feet East of the N.E. cor. Suncrest Acres Third Addition to the City of McPherson, Kansas; thence N. 00°09'29" W., parallel with the extended East line of said Suncrest Acres Third Addition a distance of 185.00 feet; thence S. 88°51'24" W., a distance of 30.00 feet; thence N. 00°09'29" W., a distance of 540.26 feet; thence S. 88°47'42" W., a distance of 1488.41 feet to a point in the West line of said SW 1/4; thence S. 00°00'00" W., along the West line of said SW 1/4, a distance of 66.00 feet; thence N. 88°47'42" E., a distance of 661.08 feet; thence S. 00°04'59" E., a distance of 658.39 feet to the point of beginning, except therefrom the West 40.00 feet conveyed for highway purposes, AND ALSO the SW 1/4 of the NW 1/4 of the SW 1/4 of Section 16, Township 19 South, Range 3 West of the 6th P.M., McPherson County, Kansas, except the West 40.00 feet thereof conveyed for highway purposes. The above described tract contains 24.23 acres, more or less.

Signed March 13, 1995

Craig Moehring  
Craig Moehring L.S. KANS. #875



### OWNER'S CERTIFICATION AND DEDICATION

STATE OF KANSAS } S.S.  
COUNTY OF McPHERSON }  
This is to certify the the undersigned owner(s) of the land described in the Surveyor's Certificate have caused the same to be surveyed and subdivided on the accompanying plat into lots, blocks, streets and other public ways under the name of NORTH SUNCREST HEIGHTS, an Addition to the City of McPherson, McPherson County, Kansas; that all highways, streets, alleys, easements and public grounds as denoted on the plat are hereby dedicated to and for the use of the public for the purpose of constructing, operating, maintaining and repairing public improvements; and further that the land contained herein is held and shall be conveyed subject to any applicable restrictions, reservations and covenants now on file or hereafter filed in the Office of the Register of Deeds of McPherson County, Kansas. All abutter's rights of access over and across the East line of Main Street are hereby granted to the appropriate governing body, provided however that Lot 1, Block A, shall have access to Main Street at one (1) location, to be determined by the Engineer of the appropriate governing body.  
Unified School District No. 418, McPherson, Kansas

Date Signed: 3/17/95  
Virgil E. Skipton, President  
Date Signed: 3/17/95  
Perry McCabe, Clerk

### NOTARY CERTIFICATE

STATE OF KANSAS } S.S.  
COUNTY OF McPHERSON }  
The foregoing instrument was acknowledged before me this 17th day of March, 1995, by Virgil E. Skipton, President, and Perry McCabe, Clerk, on behalf of Unified School District #418, McPherson, KS  
Agnes Berger, Notary Public  
My Commission Expires: 3-1-98

### CERTIFICATE AS TO CITY PUBLIC IMPROVEMENTS

STATE OF KANSAS } S.S.  
CITY OF McPHERSON }  
We, the undersigned, do hereby certify the the required guarantees are posted with the City for the completion of the improvements covering all streets, storm sewers, sanitary sewer system and domestic water supply and distribution system pertaining to the subject plat and not under other Federal, State or County completion obligations; which are based on a licensed Engineer's plans and specifications; and which are approved by all public authorities having jurisdiction.  
Date Signed: 4/4/95  
Melvin V. Ferguson, City Engineer  
Date Signed: 4/4/95  
R.N. Anderson, General Manager of Board of Public Utilities, City of McPherson, Kansas

### REGISTER OF DEEDS CERTIFICATE



State of Kansas, McPherson Co., SS: 1813  
This instrument was filed for record on the 13th day of April, A.D., 1995 at 10:00 o'clock AM, and duly recorded in book 1813 on page 35  
Richard A. ...  
Register of Deeds  
\$20.00

- BENCHMARKS:
- 1) "□" on SW Cor. R.C.B.C., 300' West of S 1/4 Cor., Sec. 16-19-3W, Elev. = 1493.03 N.G.V.D.
  - 2) 60d spike in utility pole, 25' N. & 10' W. of the SW Cor. Lot 1, Block A, North Suncrest Heights, Elev. = 1510.61 N.G.V.D.